

# Three Lakes Clarity Monitoring Program

## June 2015 Report

All data in this report is PROVISIONAL and SUBJECT TO REVISION

Data used is provided by GCWIN, USGS, BOR and NCWCD.

Secchi depths reported are measured using a view scope.

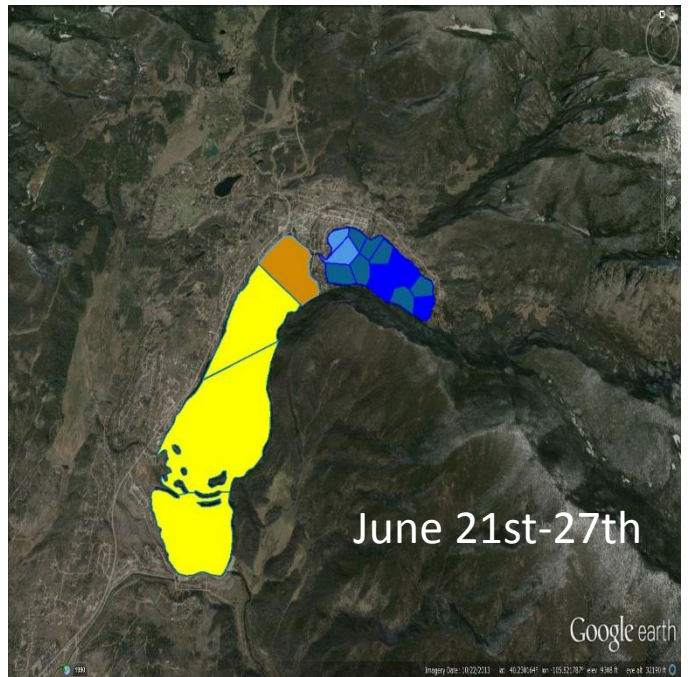
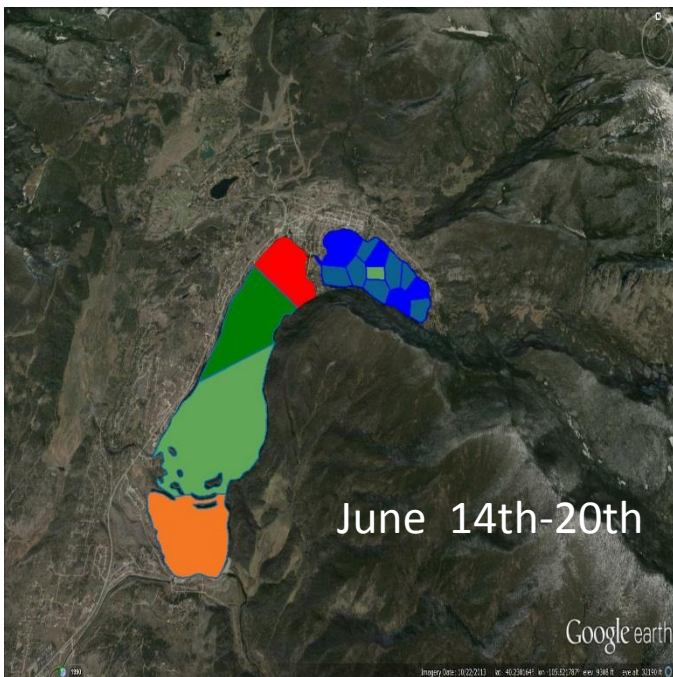
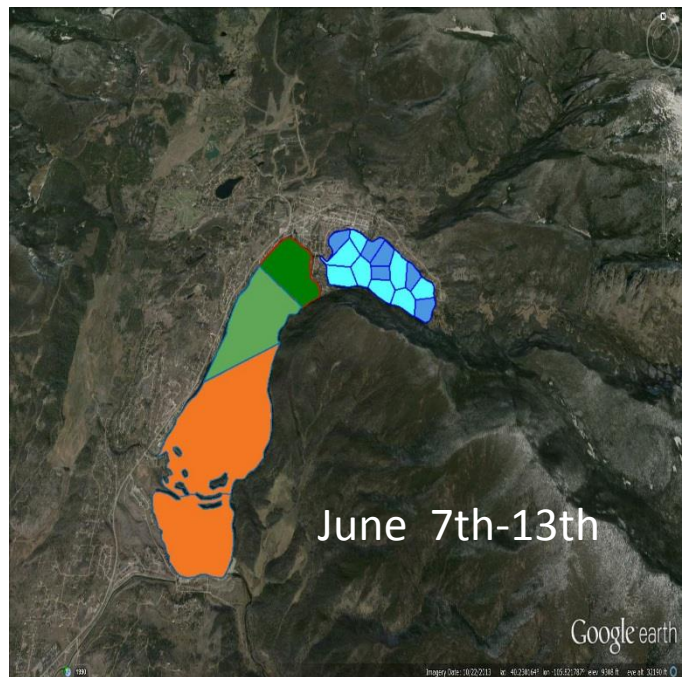
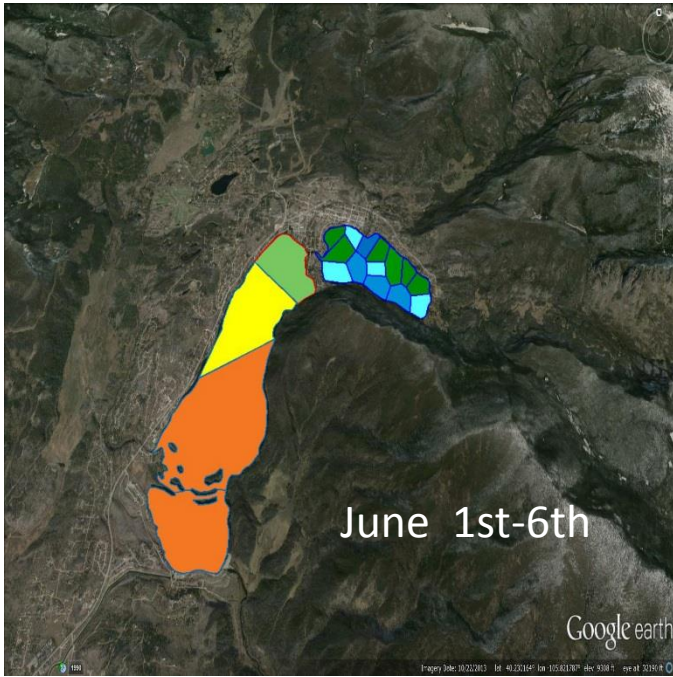
### June synopsis

**Grand Lake** – Clarity averaged 4.37m. Average surface temperature was 49°F. Inflow from the East Inlet fluctuated throughout the month starting at 236cfs and ended at 180cfs. Inflow from the North Inlet fluctuated throughout the month starting at 300cfs and ended at 213cfs. Outflow at Adams Tunnel started at 1cfs and only reached a high of 2cfs and ended the month at 1cfs.

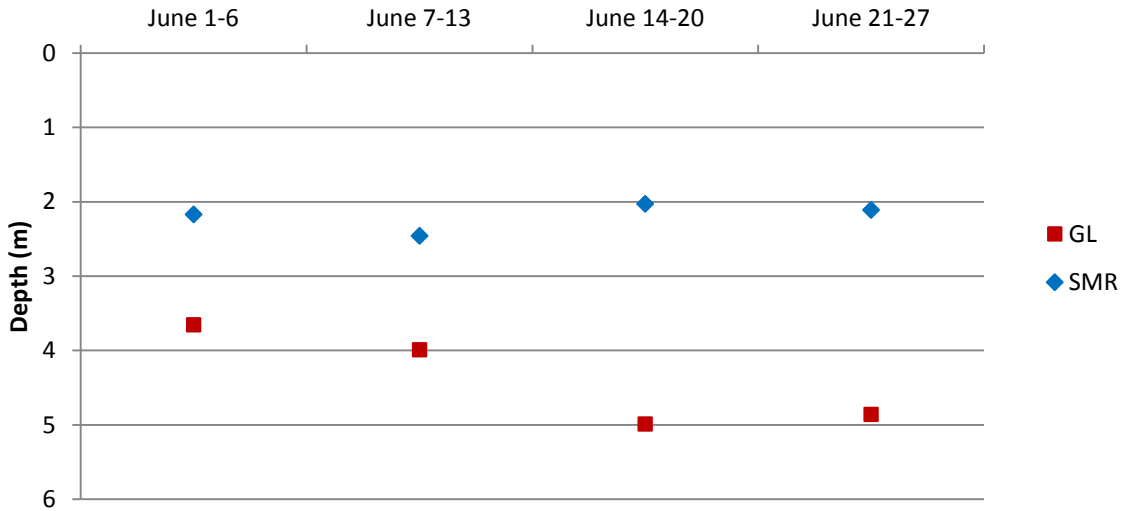
**Shadow Mountain Reservoir** – Clarity averaged 2.19m. Average surface temperature was 53°F. Inflow from the North Fork decreased from 400cfs to 143cfs by the end of the month. Inflow at the Farr Pump was 0cfs for the month of June. Outflow at the Granby Dam decreased from 1442cfs to 735cfs.

**Connecting Channel Flow** – Velocity fluctuated, starting at -566cfs reaching a high of 90cfs and ending at -403cfs flowing to Shadow Mountain Reservoir.

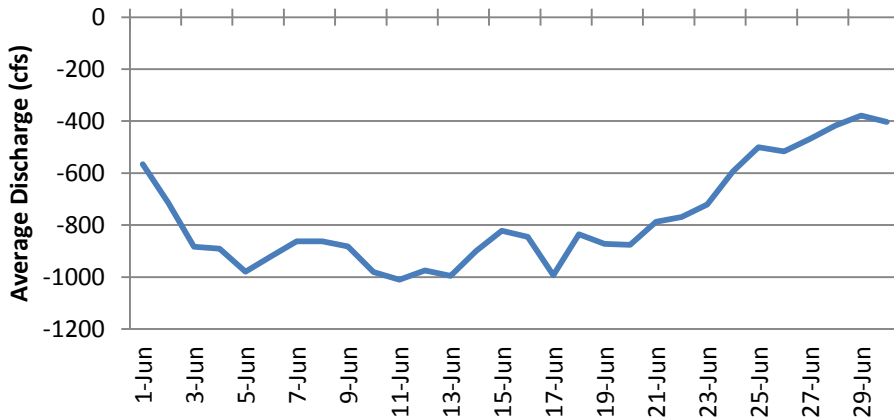
Secchi Depth (m)	
<1.0	4.0 - 4.5
1.0 - 1.5	4.5 - 5.0
1.5 - 2.0	5.0 - 5.5
2.0 - 2.5	5.5 - 6.0
2.5 - 3.0	6.0 - 6.5
3.0 - 3.5	6.5 - 7.0
3.5 - 4.0	> 7.0



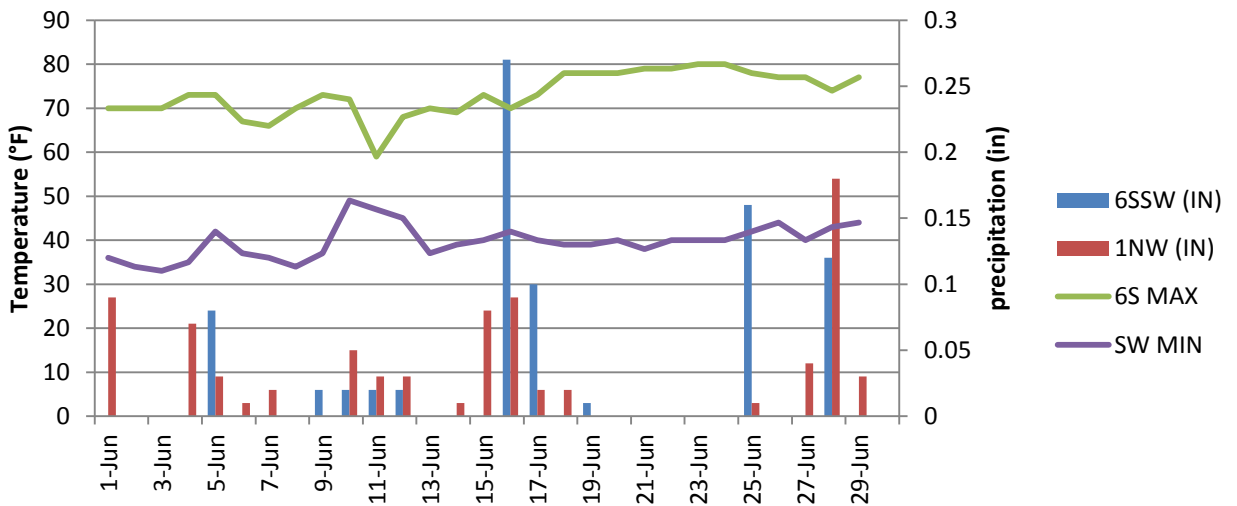
# Average Weekly Secchi Depth Chart



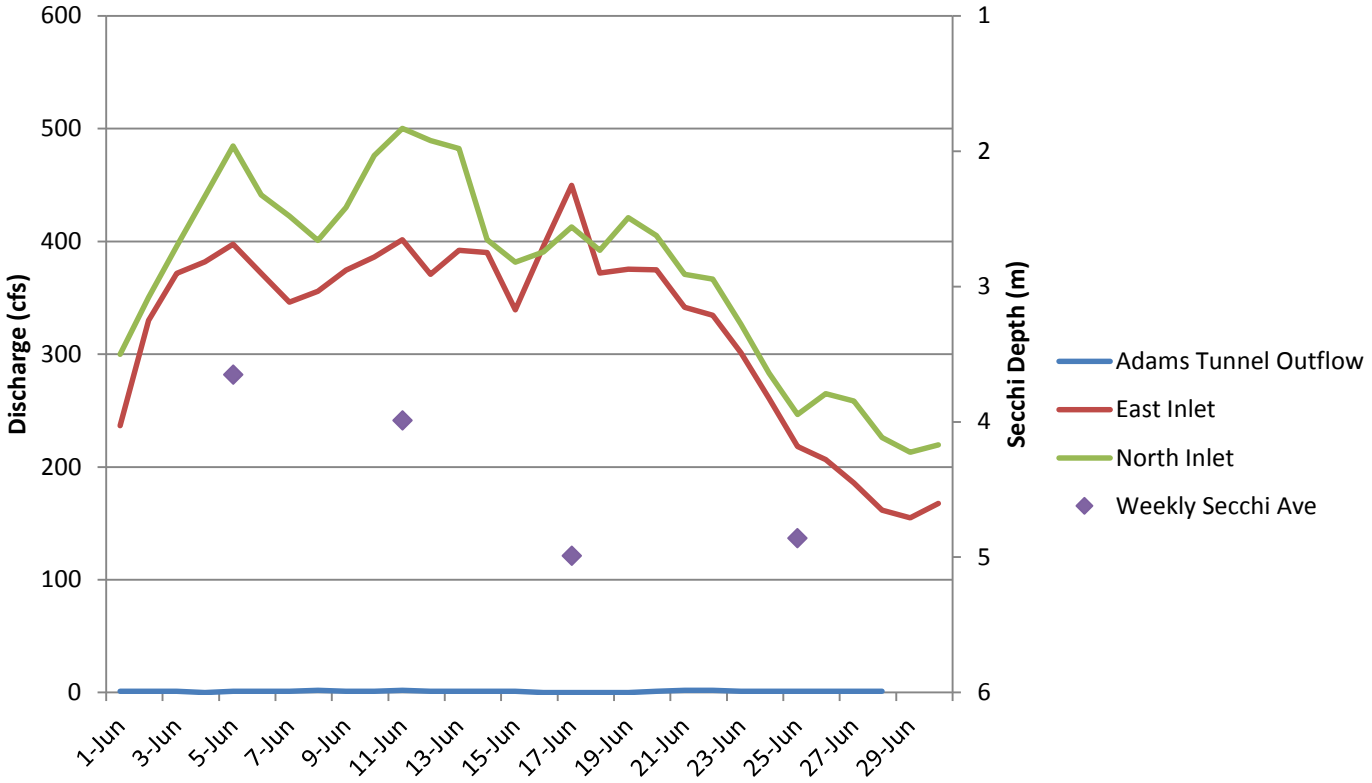
## Connecting Channel Flow



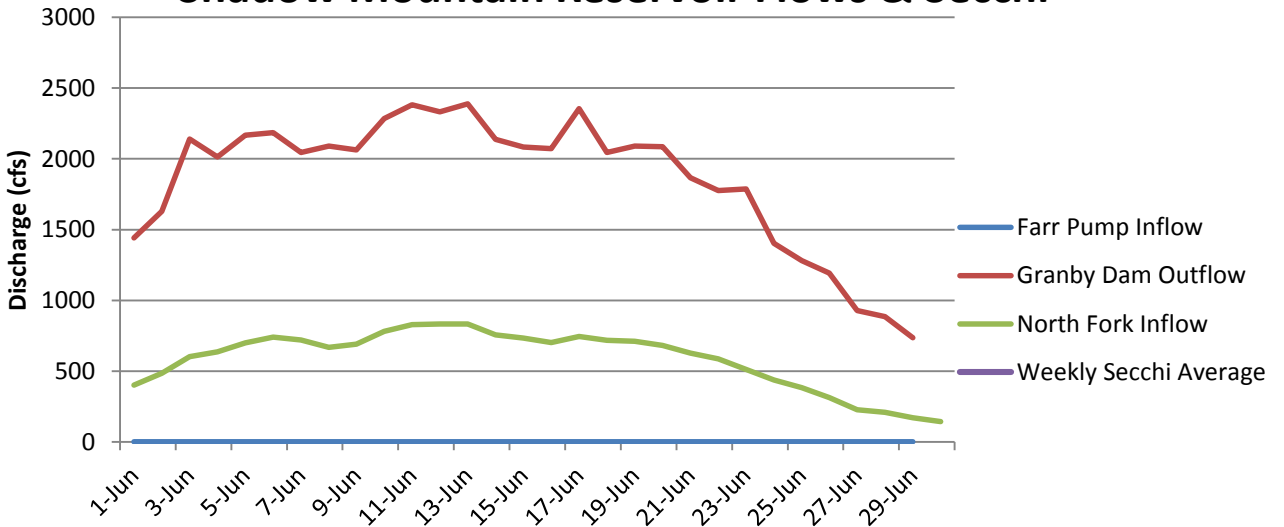
## Weather Around Grand Lake



## Grand Lake Flows & Secchi



## Shadow Mountain Reservoir Flows & Secchi



If you are interested in viewing current conditions, you can check the following links:

- For real-time data on SMR– GL connecting channel: :  
[http://waterdata.usgs.gov/nwis/dv?referred\\_module=sw&site\\_no=09014050](http://waterdata.usgs.gov/nwis/dv?referred_module=sw&site_no=09014050)
- For information on stream inflows:  
<http://www.northernwater.org/WaterProjects/WestSlopeWaterData.aspx?WDType=R>
- For five-day archives of Adams Tunnel flows:  
[http://www.usbr.gov/gp-bin/hydromet\\_archives.pl?adatunco](http://www.usbr.gov/gp-bin/hydromet_archives.pl?adatunco)
- For Grand County’s water resource page: <http://co.grand.co.us/408/Water-Resource-Management>
- For weather, gages, snow, avalanche reports , and water news: [www.crwcd.org](http://www.crwcd.org)
- For water quality data around Grand County <http://www.gcwin.org>