

Three Lakes Clarity Monitoring Program

October 2014 Report

All data in this report is PROVISIONAL and SUBJECT TO REVISION

Data used is provided by GCWIN, USGS, BOR and NCWCD.

Secchi depths reported are measured using a view scope.

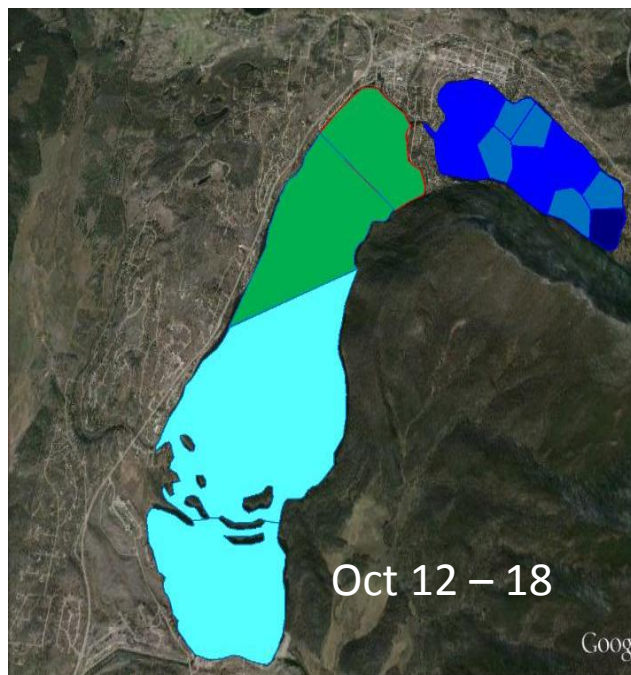
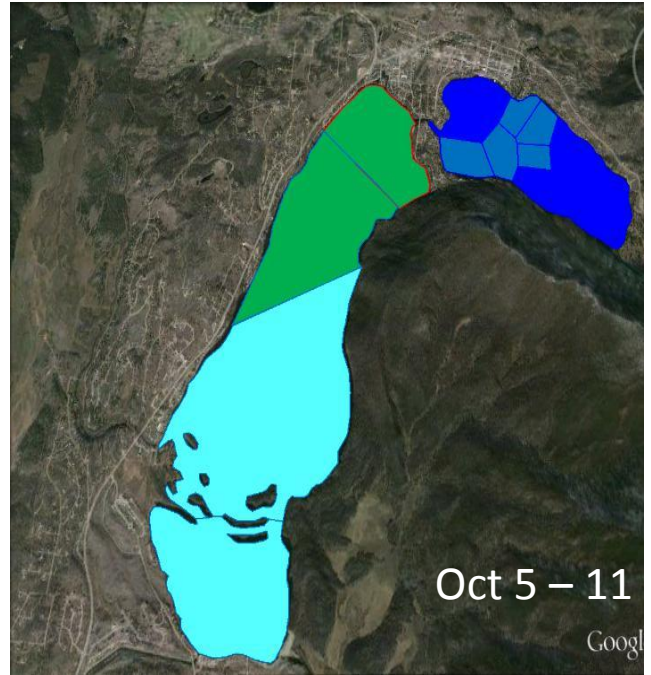
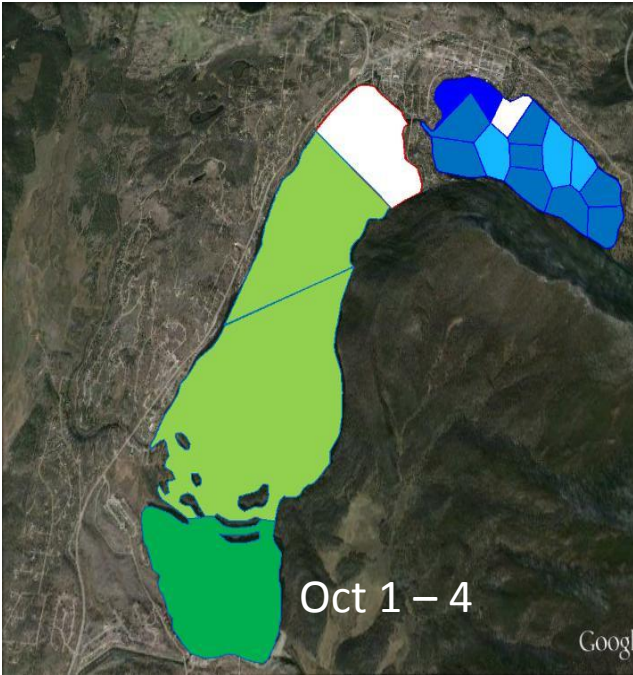
October synopsis

Grand Lake – Clarity averaged 4.85m. Average surface temperature was 51°F. Inflow from the East Inlet fluctuated throughout the month starting at 50cfs and ended at 17cfs. Inflow from the North Inlet fluctuated throughout the month starting at 92cfs reaching 69cfs mid month and ended at 31cfs. Outflow at Adams Tunnel started at 47cfs and reached a high of 377 by the end of the month.

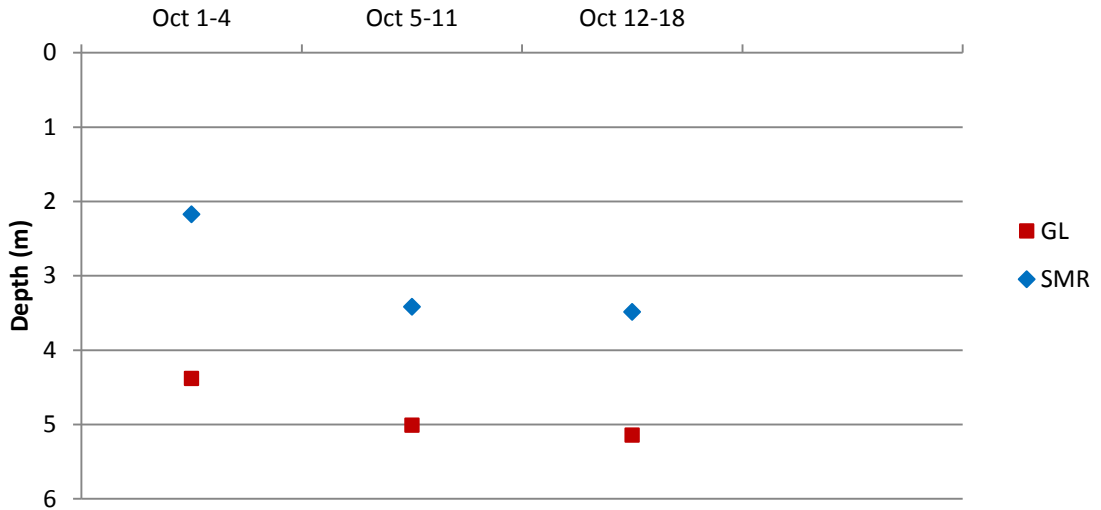
Shadow Mountain Reservoir – Clarity averaged 3.02m. Average surface temperature was 49°F. Inflow from the North Fork decreased from 104cfs to 66cfs by the end of the month. Inflow at the Farr Pump was 0cfs until October 24th. It started at 10cfs and ended the month at 108cfs. Outflow at the Granby Dam decreased throughout the month from 339cfs to 35cfs.

Connecting Channel Flow – Velocity fluctuated, starting at -156cfs and ending at -58cfs flowing to Shadow Mountain Reservoir.

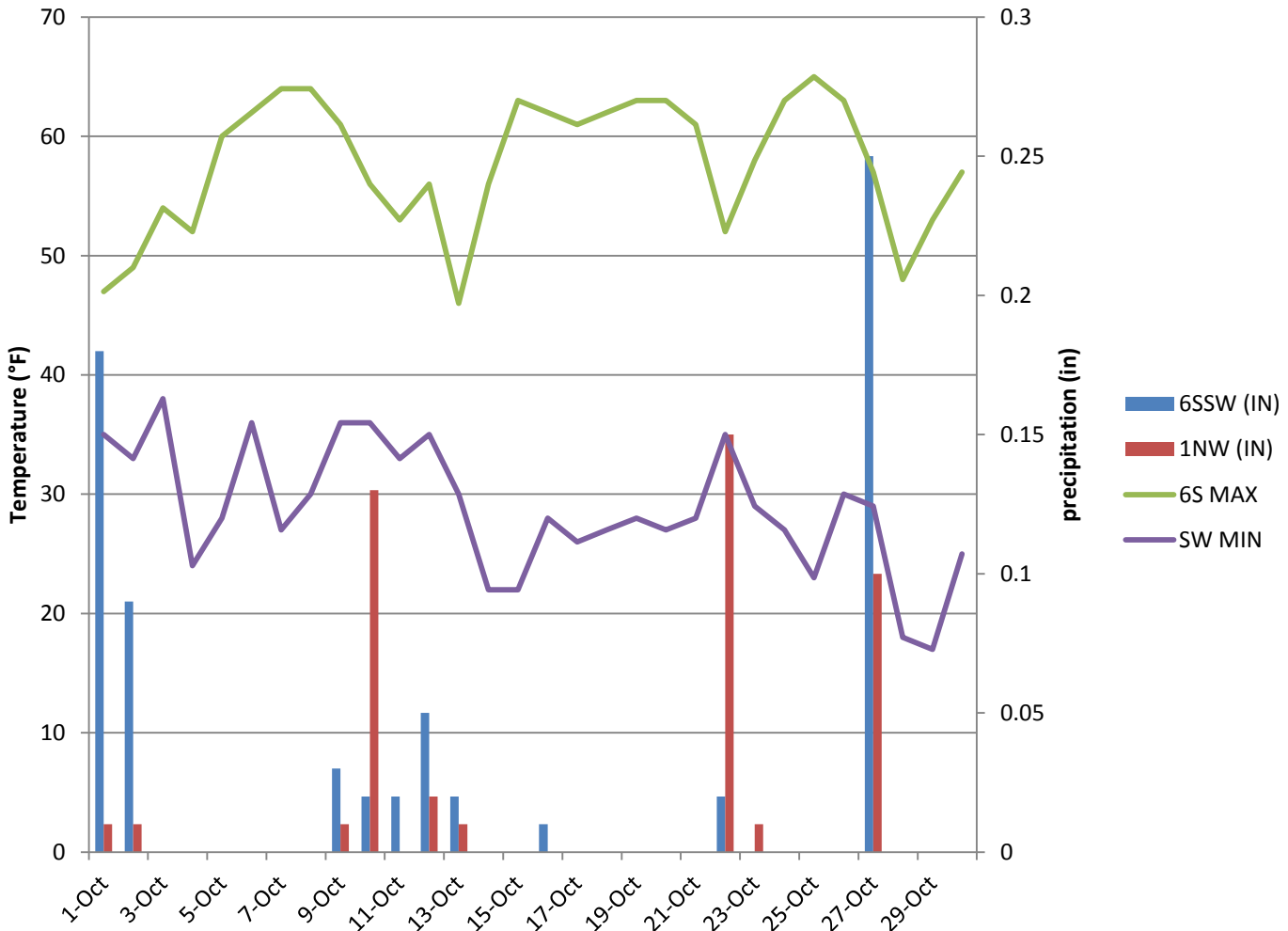
Secchi Depth (m)	
<1.0	4.0 - 4.5
1.0 - 1.5	4.5 - 5.0
1.5 - 2.0	5.0 - 5.5
2.0 - 2.5	5.5 - 6.0
2.5 - 3.0	6.0 - 6.5
3.0 - 3.5	6.5 - 7.0
3.5 - 4.0	> 7.0



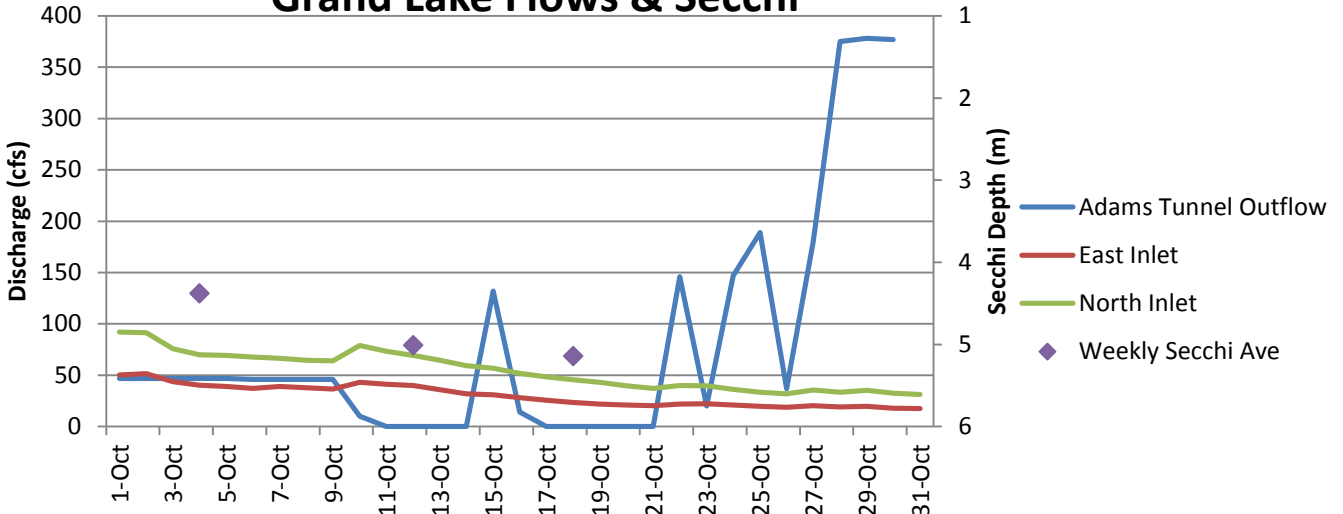
Average Weekly Secchi Depth Chart



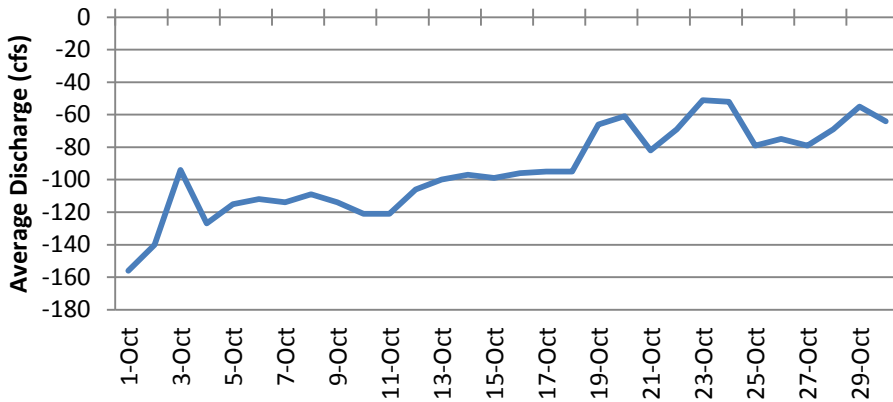
Weather Around Grand Lake



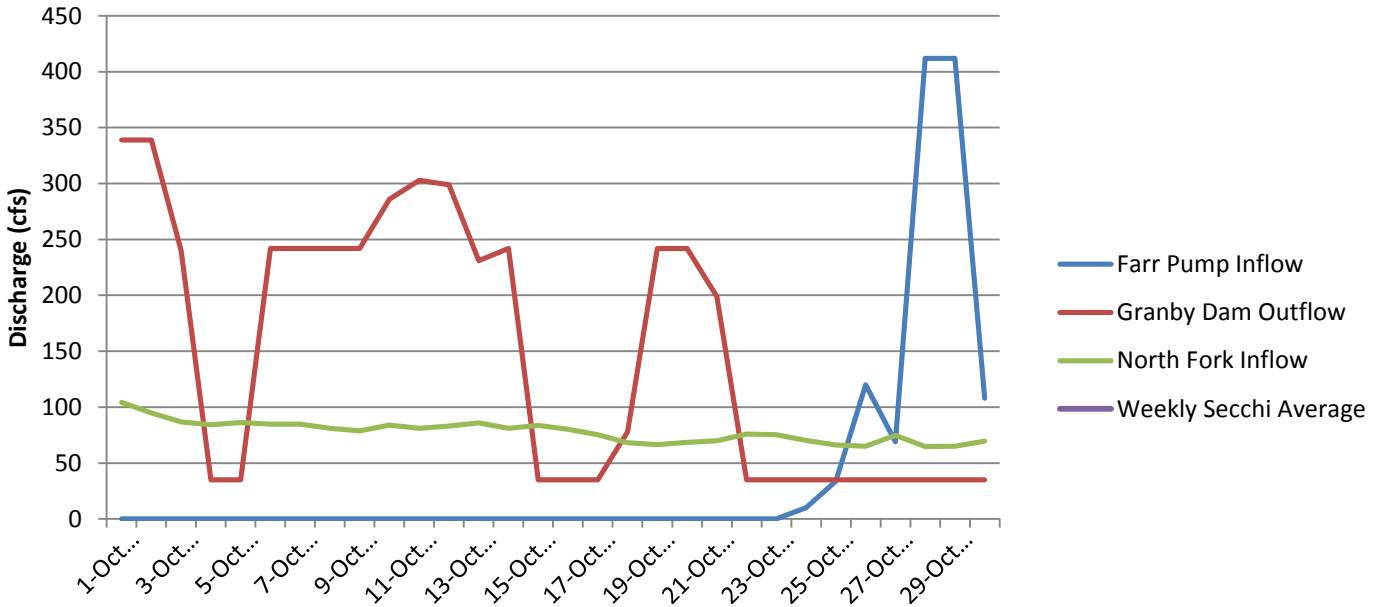
Grand Lake Flows & Secchi



Connecting Channel Flow



Shadow Mountain Reservoir Flows & Secchi



If you are interested in viewing current conditions, you can check the following links:

- For real-time data on SMR– GL connecting channel: :
http://waterdata.usgs.gov/nwis/dv?referred_module=sw&site_no=09014050
- For information on stream inflows:
<http://www.northernwater.org/WaterProjects/WestSlopeWaterData.aspx?WDType=R>
- For five-day archives of Adams Tunnel flows:
http://www.usbr.gov/gp-bin/hydromet_archives.pl?adatunco
- For Grand County’s water resource page: <http://co.grand.co.us/408/Water-Resource-Management>
- For weather, gages, snow, avalanche reports , and water news: www.crwcd.org
- For water quality data around Grand County <http://www.gcwin.org>