

Three Lakes Clarity Monitoring Program

May 2014 Report

All data in this report is PROVISIONAL and SUBJECT TO REVISION

Data used is provided by GCWIN, USGS, BOR and NCWCD.

Secchi depths reported are measured using a view scope.

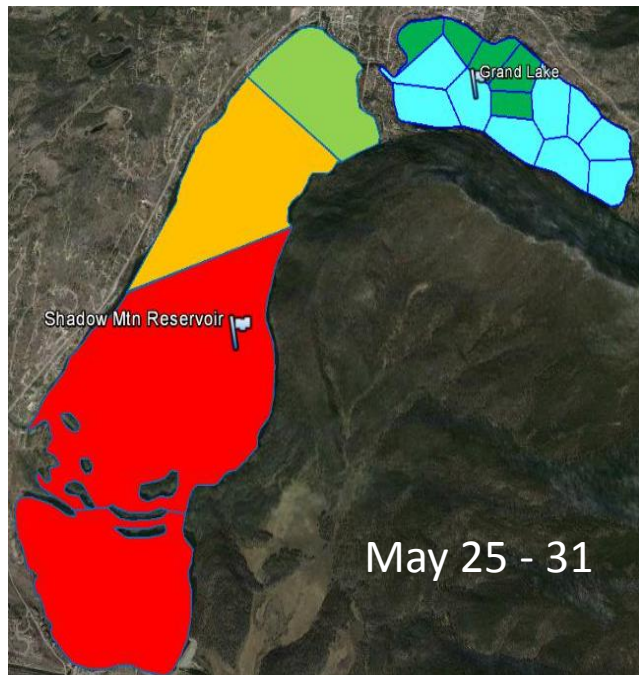
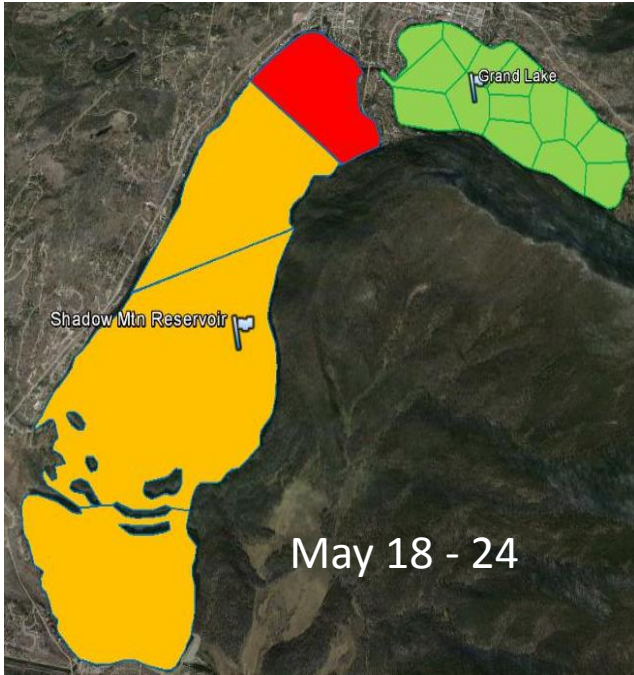
May synopsis

Grand Lake – Secchi readings started on May 21st. Clarity averaged 3.07m. Average surface temperature was 45°F. Inflow from the East Inlet increased throughout the month from 25cfs to 499cfs. Inflow from the North Inlet increased throughout the month from 50cfs to 729cfs. Outflow at Adams Tunnel averaged 500cfs from May 1st to 22nd and then decreased to 0cfs from May 27th to 29th.

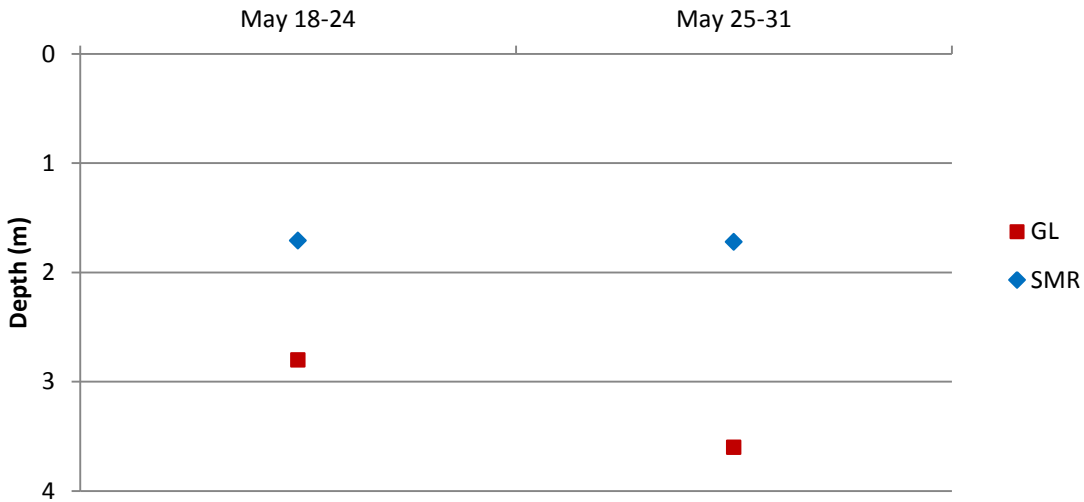
Shadow Mountain Reservoir –Secchi readings started on May 21st. Clarity averaged 1.67m. Average surface temperature was 50°F. Inflow from the North Fork increased from 11cfs on May 1st to 1,298cfs on May 32st. Inflow at the Farr Pump was 0cfs from May 18th to the end of the month. Outflow at the Granby Dam increased on May 19th from 20cfs to end the month at 3,319cfs.

Connecting Channel Flow – Velocity fluctuated, starting at 396cfs flowing to Grand Lake and ending at 1,370cfs flowing to Shadow Mountain Reservoir.

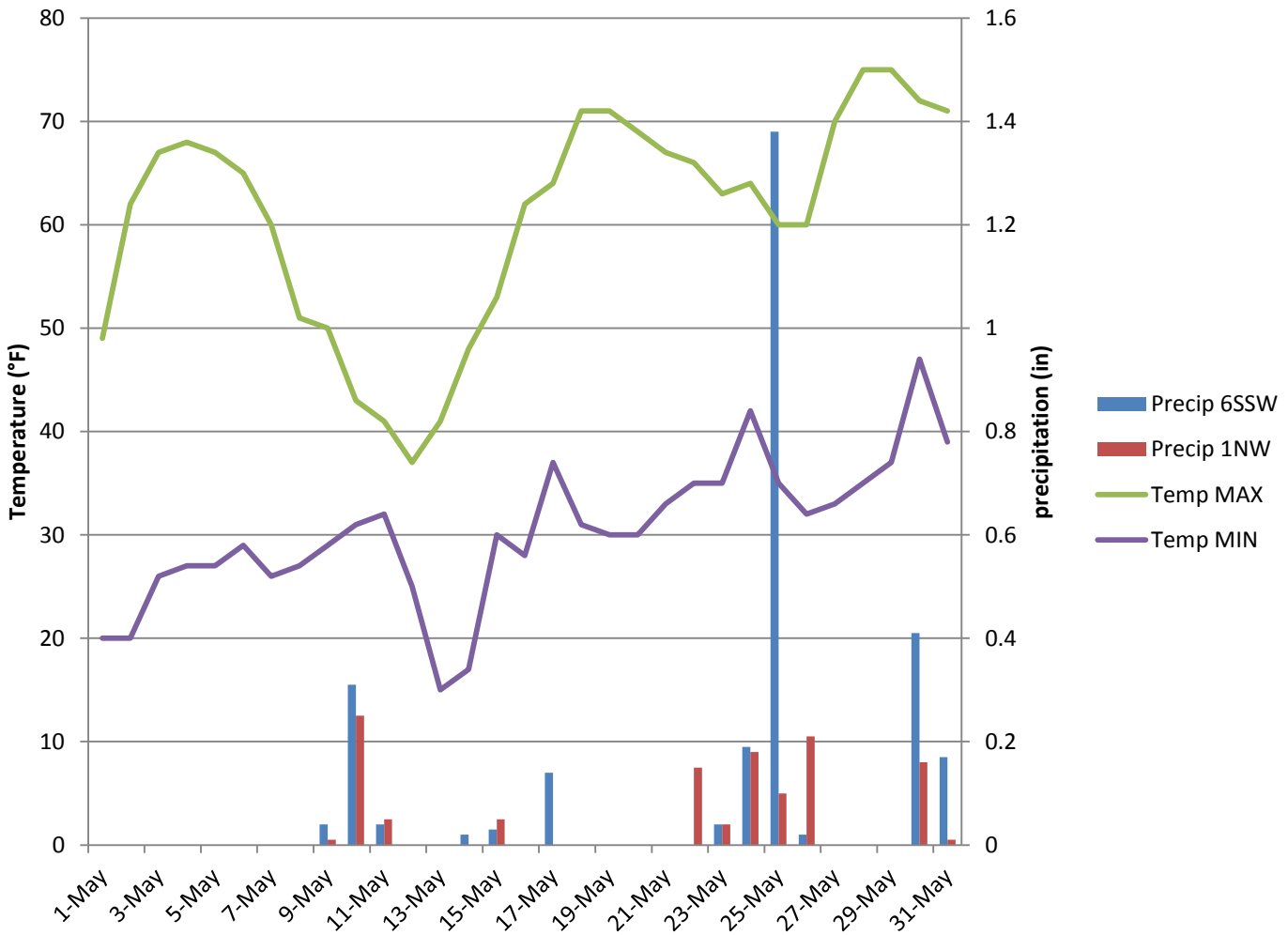
Secchi Depth (m)	
<1.0	4.0 - 4.5
1.0 - 1.5	4.5 - 5.0
1.5 - 2.0	5.0 - 5.5
2.0 - 2.5	5.5 - 6.0
2.5 - 3.0	6.0 - 6.5
3.0 - 3.5	6.5 - 7.0
3.5 - 4.0	> 7.0



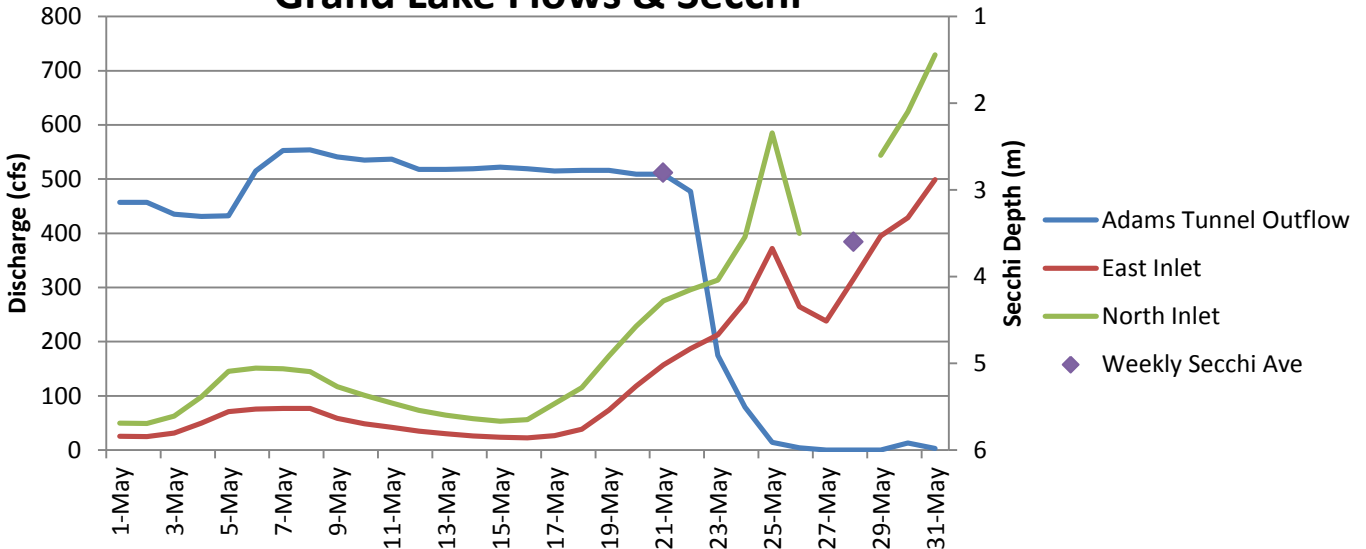
Average Weekly Secchi Depth Chart



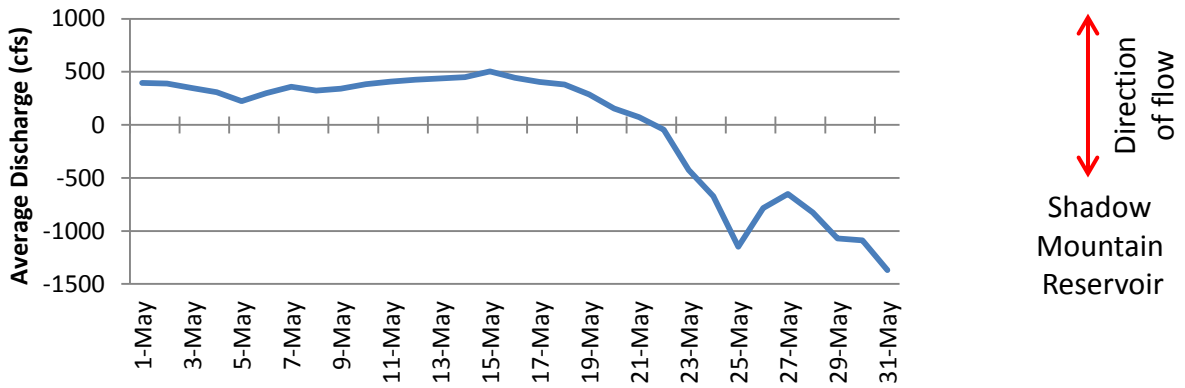
Weather Around Grand Lake



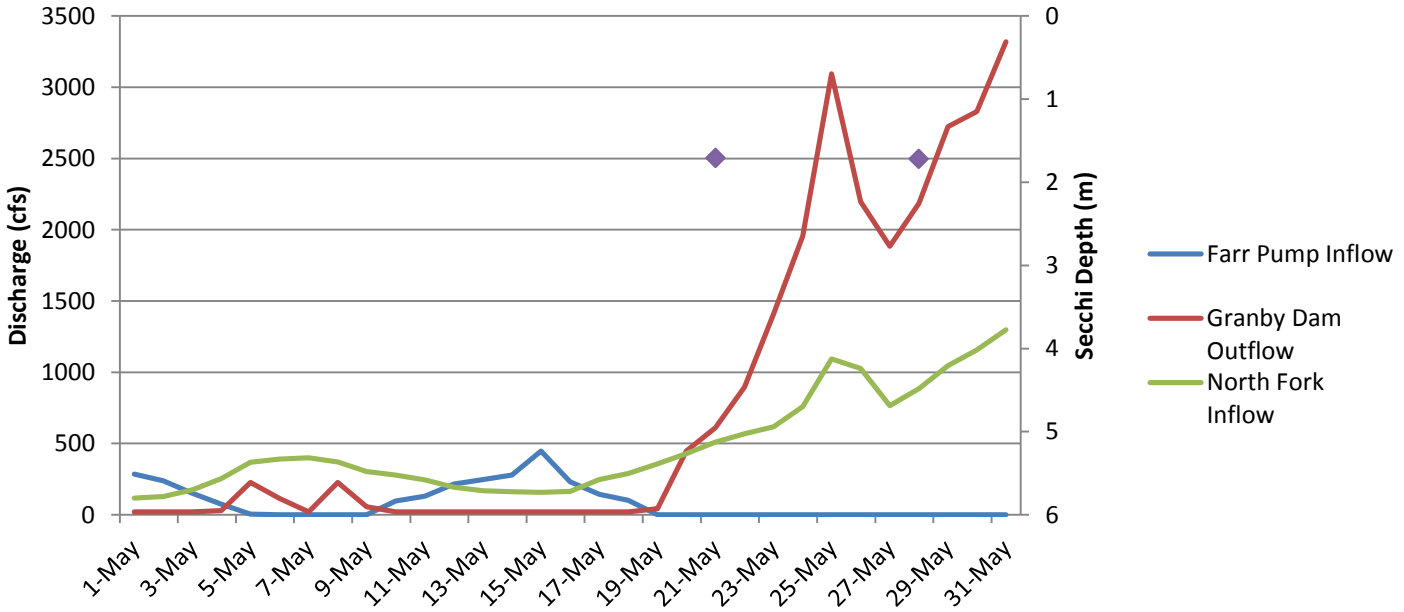
Grand Lake Flows & Secchi



Connecting Channel Flow



Shadow Mountain Reservoir Flows & Secchi



If you are interested in viewing current conditions, you can check the following links:

- For real-time data on SMR– GL connecting channel: :
http://waterdata.usgs.gov/nwis/dv?referred_module=sw&site_no=09014050
- For information on stream inflows:
<http://www.northernwater.org/WaterProjects/WestSlopeWaterData.aspx?WDType=R>
- For five-day archives of Adams Tunnel flows:
http://www.usbr.gov/gp-bin/hydromet_archives.pl?adatunco
- For Grand County’s water resource page: <http://co.grand.co.us/408/Water-Resource-Management>
- For weather, gages, snow, avalanche reports , and water news: www.crwcd.org
- For water quality data around Grand County <http://www.gcwin.org>