

# Three Lakes Clarity Monitoring Program

## July 2014 Report

All data in this report is PROVISIONAL and SUBJECT TO REVISION

Data used is provided by GCWIN, USGS, BOR and NCWCD.

Secchi depths reported are measured using a view scope.

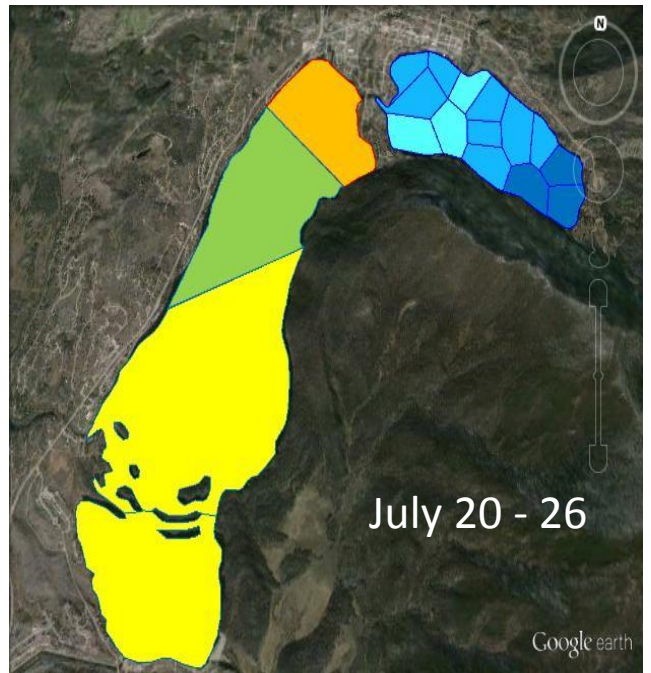
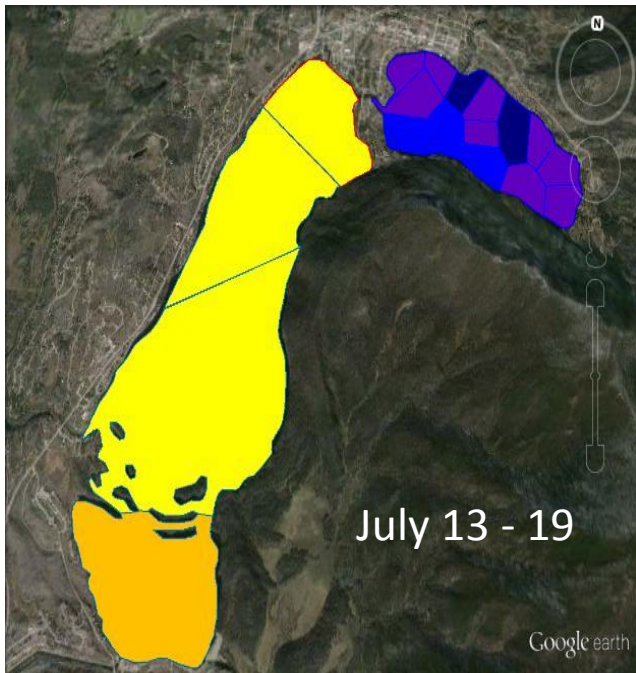
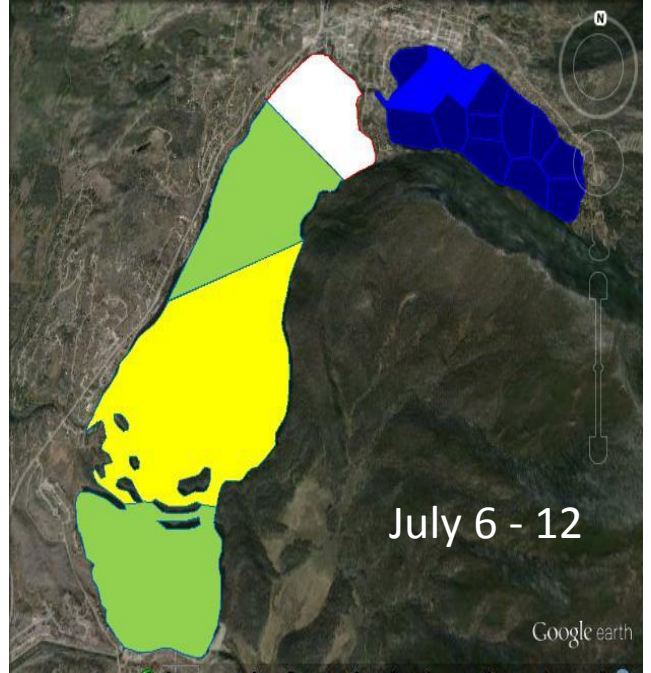
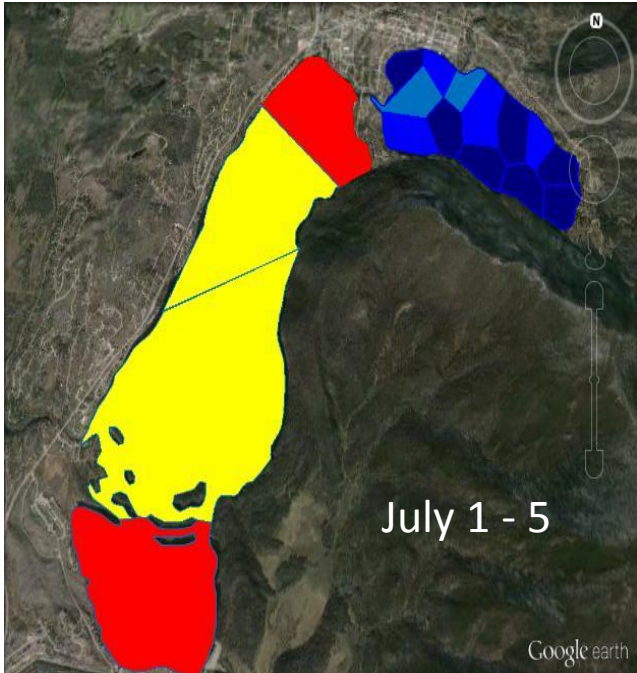
### July synopsis

**Grand Lake** – Clarity averaged 5.40m. Average surface temperature was 57°F. Inflow from the East Inlet fluctuated throughout the month starting at 238cfs and ended at 98cfs. Inflow from the North Inlet fluctuated throughout the month starting at 259cfs and ended at 135cfs. Outflow at Adams Tunnel started at 259cfs and ended the month at 106cfs.

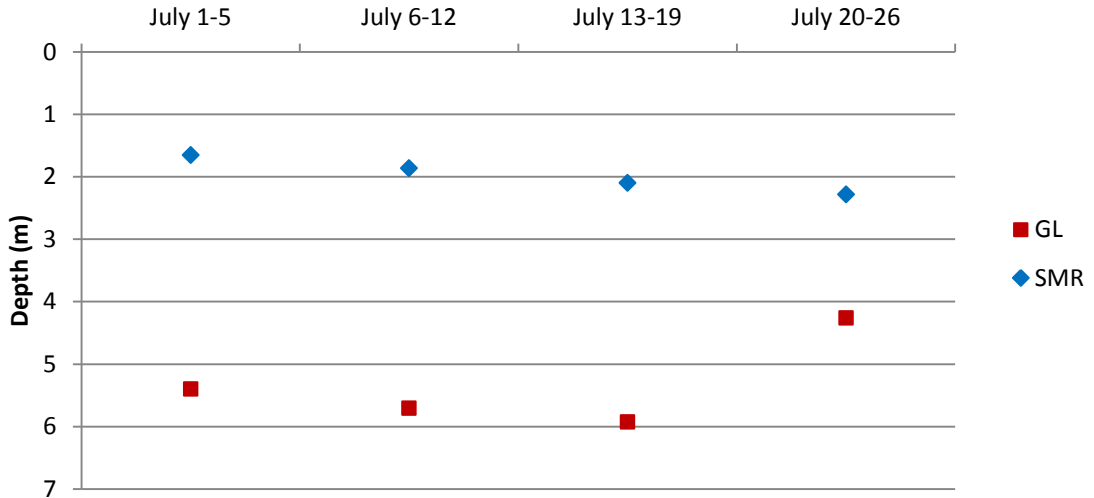
**Shadow Mountain Reservoir** – Clarity averaged 1.90m. Average surface temperature was 61°F. Inflow from the North Fork decreased from 315cfs to 150cfs at the end of the month. Inflow at the Farr Pump was 0cfs until July 14<sup>th</sup> when it was 15cfs inflow fluctuated throughout the month and ended at 0cfs. Outflow at the Granby Dam fluctuated from 931cfs to end the month at 431cfs.

**Connecting Channel Flow** – Velocity fluctuated, starting at 278cfs and ending at -164cfs flowing to Shadow Mountain Reservoir.

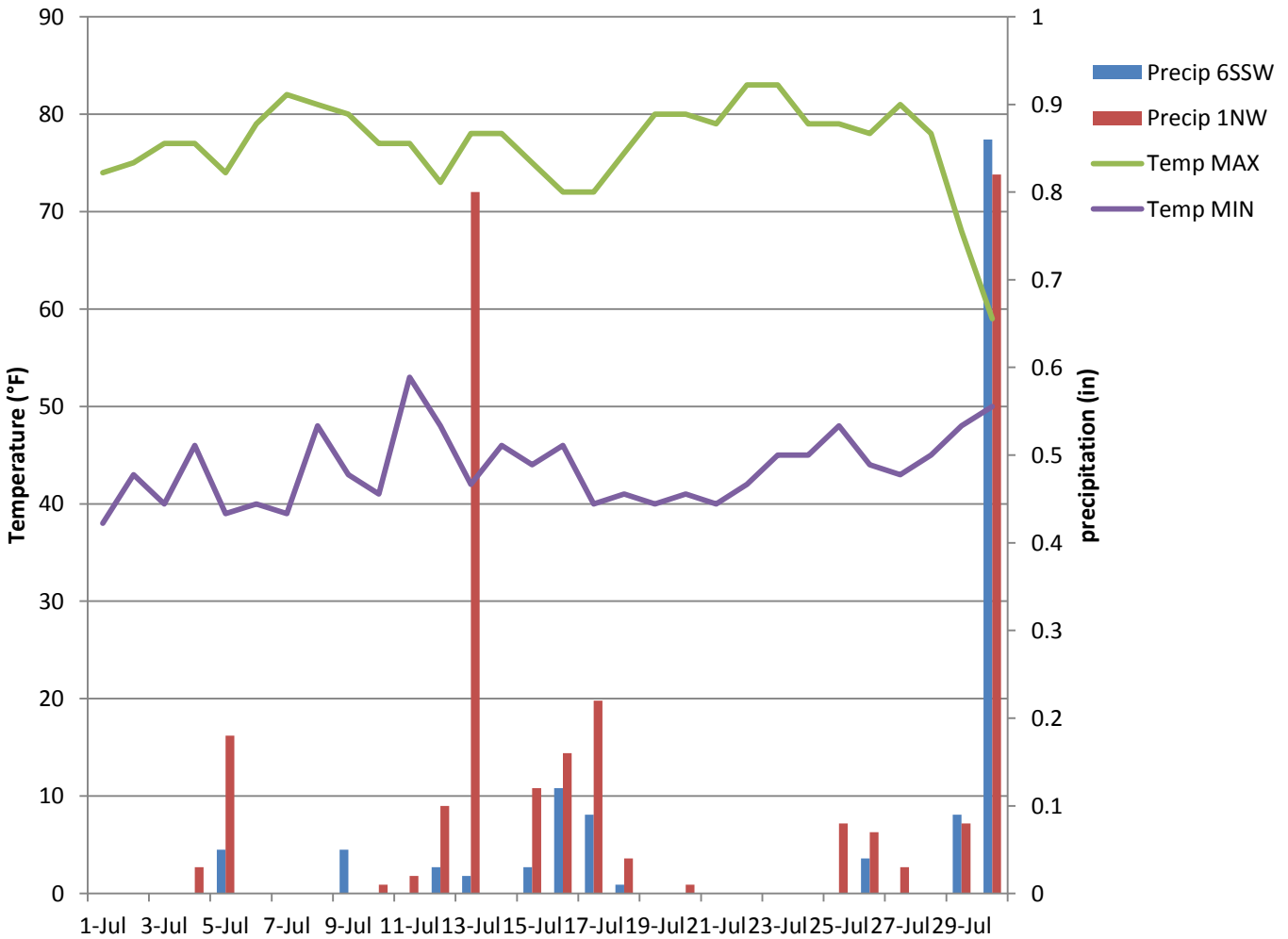
Secchi Depth (m)	
<1.0	4.0 - 4.5
1.0 - 1.5	4.5 - 5.0
1.5 - 2.0	5.0 - 5.5
2.0 - 2.5	5.5 - 6.0
2.5 - 3.0	6.0 - 6.5
3.0 - 3.5	6.5 - 7.0
3.5 - 4.0	>7.0



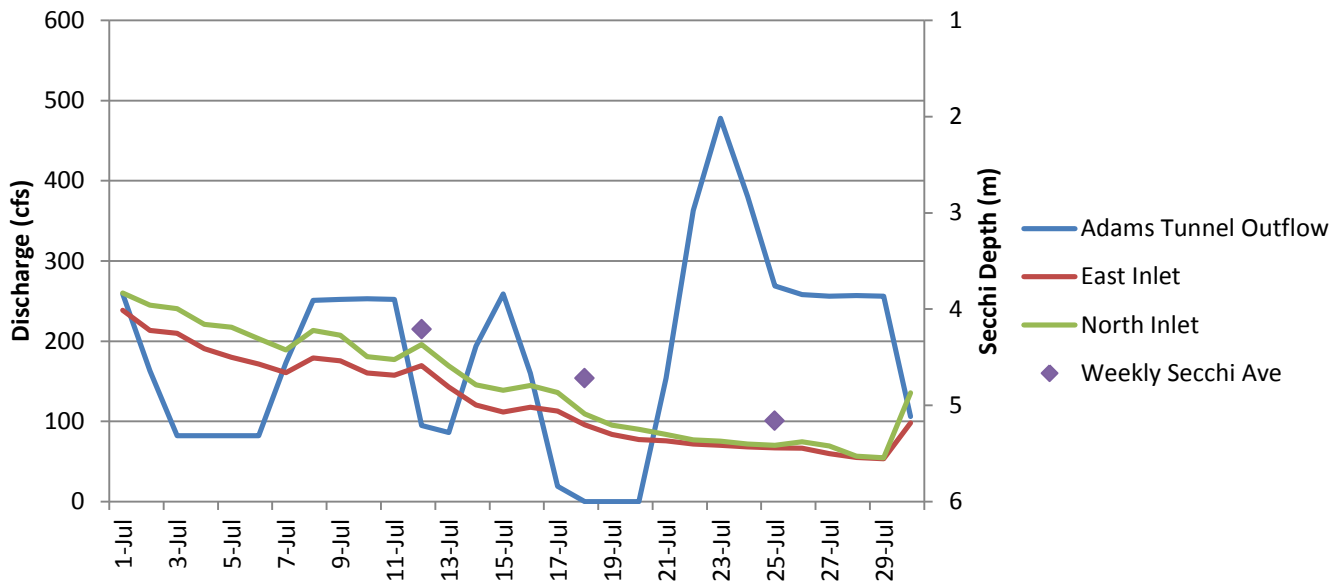
# Average Weekly Secchi Depth Chart



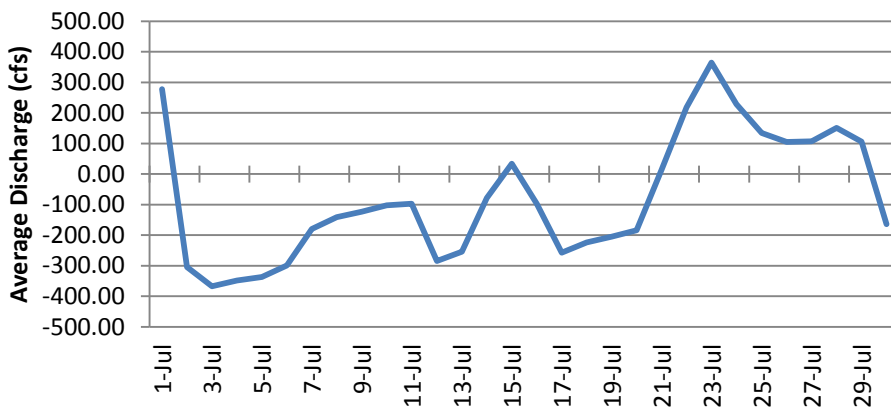
# Weather Around Grand Lake



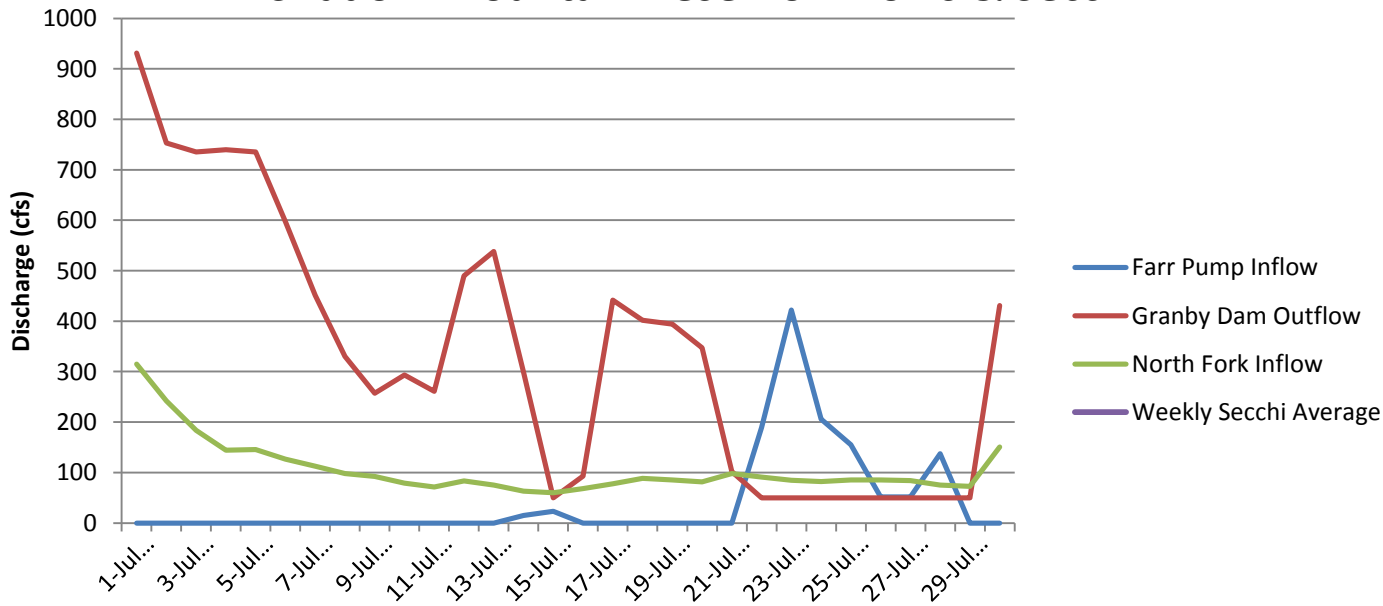
## Grand Lake Flows & Secchi



## Connecting Channel Flow



## Shadow Mountain Reservoir Flows & Secchi



If you are interested in viewing current conditions, you can check the following links:

- For real-time data on SMR– GL connecting channel: :  
[http://waterdata.usgs.gov/nwis/dv?referred\\_module=sw&site\\_no=09014050](http://waterdata.usgs.gov/nwis/dv?referred_module=sw&site_no=09014050)
- For information on stream inflows:  
<http://www.northernwater.org/WaterProjects/WestSlopeWaterData.aspx?WDType=R>
- For five-day archives of Adams Tunnel flows:  
[http://www.usbr.gov/gp-bin/hydromet\\_archives.pl?adatunco](http://www.usbr.gov/gp-bin/hydromet_archives.pl?adatunco)
- For Grand County’s water resource page: <http://co.grand.co.us/408/Water-Resource-Management>
- For weather, gages, snow, avalanche reports , and water news: [www.crwcd.org](http://www.crwcd.org)
- For water quality data around Grand County <http://www.gcwin.org>